

SPECIAL ISSUE: EVIDENCE-BASED IMAGING

ORIGINAL RESEARCH

Prognostic Value of Preprocedural LV Global Longitudinal Strain for Post-TAVR-Related Morbidity and Mortality



A Meta-Analysis

Niels A. Stens, MSc,^{a,b} Odette van Iersel, BSc,^b Max J.P. Rooijackers, MD,^a Marleen H. van Wely, MD,^a Robin Nijveldt, MD, PhD,^a Esmée A. Bakker, PhD,^b Laura Rodwell, PhD,^c Anders L.D. Pedersen, MD,^d Steen H. Poulsen, MD, PhD,^d Didrik Kjørnås, MD,^e Jan Stassen, MD, PhD,^f Jeroen J. Bax, MD, PhD,^{f,g} Felix C. Tanner, MD, PhD,^h Stamatios Lerakis, MD, PhD,ⁱ Sara Shimoni, MD,^j Frédéric Poulin, MD, MSc,^k Vera Ferreira, MD, PhD,^l Vlatka Reskovic Luksic, MD, PhD,^m Niels van Royen, MD, PhD,^a Dick H.J. Thijssen, PhD^{b,n}

ABSTRACT

BACKGROUND Left ventricular ejection fraction (LVEF) demonstrates limited prognostic value for post-transcatheter aortic valve replacement (TAVR) outcomes. Evidence regarding the potential role of left ventricular global longitudinal strain (LV-GLS) in this setting is inconsistent.

OBJECTIVES The aim of this systematic review and meta-analysis of aggregated data was to evaluate the prognostic value of preprocedural LV-GLS for post-TAVR-related morbidity and mortality.

METHODS The authors searched PubMed, Embase, and Web of Science for studies investigating the association between preprocedural 2-dimensional speckle-tracking-derived LV-GLS and post-TAVR clinical outcomes. An inversely weighted random effects meta-analysis was adopted to investigate the association between LV-GLS vs primary (ie, all-cause mortality) and secondary (ie, major cardiovascular events [MACE]) post-TAVR outcomes.

RESULTS Of the 1,130 identified records, 12 were eligible, all of which had a low-to-moderate risk of bias (Newcastle-Ottawa scale). On average, 2,049 patients demonstrated preserved LVEF ($52.6\% \pm 1.7\%$), but impaired LV-GLS ($-13.6\% \pm 0.6\%$). Patients with a lower LV-GLS had a higher all-cause mortality (pooled HR: 2.01; 95% CI: 1.59-2.55) and MACE (pooled odds ratio [OR]: 1.26; 95% CI: 1.08-1.47) risk compared with patients with higher LV-GLS. In addition, each percentage point decrease of LV-GLS (ie, toward 0%) was associated with an increased mortality (HR: 1.06; 95% CI: 1.04-1.08) and MACE risk (OR: 1.08; 95% CI: 1.01-1.15).

CONCLUSIONS Preprocedural LV-GLS was significantly associated with post-TAVR morbidity and mortality. This suggests a potential clinically important role of pre-TAVR evaluation of LV-GLS for risk stratification of patients with severe aortic stenosis. (Prognostic value of left ventricular global longitudinal strain in patients with aortic stenosis undergoing Transcatheter Aortic Valve Implantation: a meta-analysis; [CRD42021289626](https://doi.org/10.1016/j.jcmg.2023.01.005)) (J Am Coll Cardiol Img 2023;16:332-341)
© 2023 by the American College of Cardiology Foundation.

From the ^aDepartment of Cardiology, Radboud Institute for Health Sciences, Radboud University Medical Center, Nijmegen, the Netherlands; ^bDepartment of Physiology, Radboud Institute for Health Sciences, Radboud University Medical Center, Nijmegen, the Netherlands; ^cDepartment of Health Evidence, section of Biostatistics, Radboud Institute for Health Sciences, Radboud University Medical Center, Nijmegen, the Netherlands; ^dDepartment of Cardiology, Aarhus University Hospital, Aarhus N, Denmark; ^eDepartment of General and Gastrointestinal Surgery, University Hospital of North Norway, Tromsø, Norway; ^fDepartment of Cardiology, Leiden University Medical Center, Leiden, the Netherlands; ^gTurku Heart Center, University of Turku

Transcatheter aortic valve replacement (TAVR) has become the method of choice to treat symptomatic, severe aortic stenosis (AS) in older patients with intermediate and high surgical risk.^{1,2} The indication for aortic valve replacement is based on symptomatology and systolic dysfunction of the left ventricle (LV), reflected by an ejection fraction of <50%.^{1,2} Interpretation of AS symptoms in older patients remains challenging,³ posing a strong emphasis on early detection of LV systolic dysfunction to facilitate timely replacement of the native calcified aortic valve. The concentric remodeling of the LV, induced by the persistent increase in afterload caused by AS, can mask decrements in left ventricular ejection fraction (LVEF) until very late in the AS disease process.⁴ Consequently, LVEF has limited value for risk stratification within the older population with AS.

In the past years, several studies have demonstrated that myocardial deformation assessment via 2-dimensional (2D)-speckle tracking represents a reliable method to evaluate clinical and subclinical systolic dysfunction.⁵⁻⁷ LV global longitudinal strain (LV-GLS) may indicate subtle changes in LV mechanics already present during early stages of AS, even when LVEF is preserved.⁴ Previous studies have examined whether impaired LV-GLS is associated with post-TAVR outcomes, both in symptomatic and asymptomatic patients with AS.^{8,9} Similarly, studies have explored the relation between preprocedural LV-GLS and post-TAVR outcomes. However, studies have reported conflicting results, which in part may relate to studies being underpowered and/or using various methodological approaches. Pooling of these studies may provide better insight into the potential prognostic value of preprocedural LV-GLS for post-TAVR morbidity and mortality.

Therefore, we systematically reviewed the current published reports and performed a comprehensive meta-analysis of aggregated data to evaluate the prognostic value of LV-GLS for post-TAVR outcomes.

We hypothesize that preprocedural LV-GLS is associated with post-TAVR-related morbidity and mortality in patients with severe AS. Identifying patients at high risk for developing clinical outcomes after TAVR allows for timely recognition, intervention, and intensified follow-up.

METHODS

This meta-analysis was reported according to the Preferred Reporting Items of Systematic Reviews and Meta-Analyses checklist.¹⁰ The protocol of this meta-analysis is registered within the PROSPERO system (CRD42021289626).

INFORMATION SOURCES AND SEARCH STRATEGY.

A systematic search of published reports was performed in 3 bibliographic databases, including PubMed, Embase (Ovid), and Web of Science, from January 2001 to April 2022. The search strategy included a combination of the following terms: strain, speckle tracking, TAVR, mortality, and cardiovascular events. [Supplemental Table 1](#) highlights the search strategy that was used within the selected bibliographic databases. Reference lists of relevant papers were thoroughly screened for additional studies.

ELIGIBILITY CRITERIA. To be eligible for inclusion in this systematic review and meta-analysis, papers had to: 1) include patients with AS who underwent TAVR; 2) quantify the LV-GLS using 2D-speckle tracking before TAVR; 3) investigate the association between preprocedural LV-GLS vs primary (ie, all-cause mortality) and secondary (ie, major adverse cardiovascular events [MACE], ie, incident rehospitalization, stroke, heart failure, myocardial infarction, revascularization or death) postprocedural outcomes; 4) define follow-up time as the interval between pre-TAVR and the end of follow-up (determined by either occurrence of an event or the duration of the study); 5) be written in English and be published in a peer-reviewed journal; and 6) be performed in adults.

ABBREVIATIONS AND ACRONYMS

2D = 2-dimensional

AS = aortic stenosis

LV = left ventricle

LVEF = left ventricular ejection fraction

LV-GLS = left ventricular global longitudinal strain

MACE = major cardiovascular events

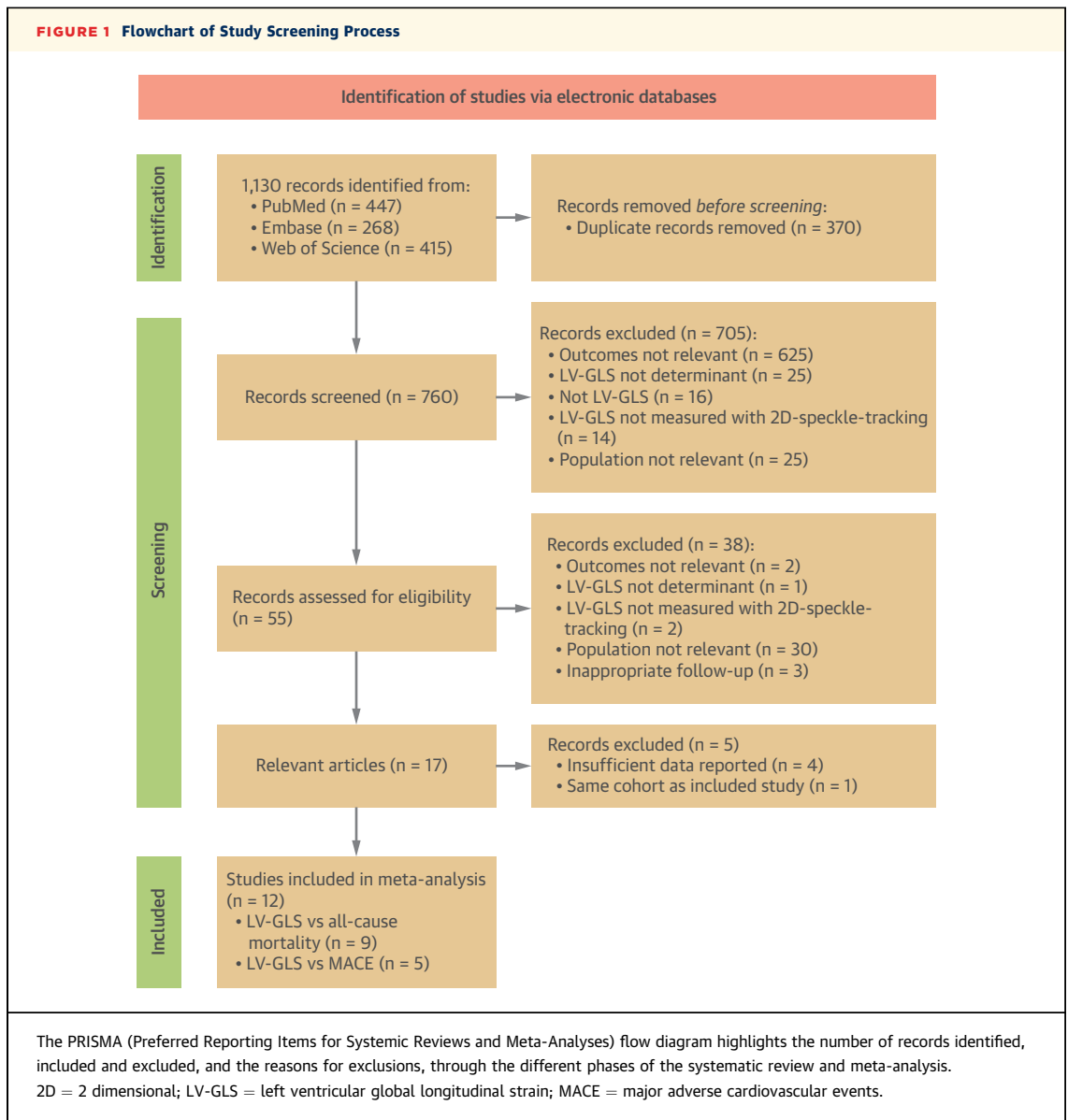
TAVR = transcatheter aortic valve replacement

and Turku University Hospital, Turku, Finland; ¹Department of Cardiology, University Heart Center Zurich, Zurich, Switzerland; ²Department of Cardiology, Mount Sinai Heart, Icahn School of Medicine at Mount Sinai, New York, New York, USA; ³The Heart Center, Kaplan Medical Center, Rehovot, Israel; ⁴Division of Cardiology, Hôpital du Sacré-Cœur de Montréal, Montréal, Canada; ⁵Department of Cardiology, Hospital de Santa Marta, Centro Hospitalar Universitário de Lisboa Central Lisbon, Lisbon, Portugal; ⁶Department of Cardiovascular Diseases, University of Zagreb School of Medicine and University Hospital Centre Zagreb, Zagreb, Croatia; and the ⁷Research Institute for Sport and Exercise Sciences, Liverpool John Moores University, Liverpool, United Kingdom.

Linda Gillam, MD, served as the Guest Editor for this paper.

The authors attest they are in compliance with human studies committees and animal welfare regulations of the authors' institutions and Food and Drug Administration guidelines, including patient consent where appropriate. For more information, visit the [Author Center](#).

Manuscript received May 9, 2022; revised manuscript received September 26, 2022, accepted January 3, 2023.



Studies addressing bicuspid valves were excluded. In addition, reviews, case studies, and conference abstracts were excluded, but no further restrictions regarding study design were applied.

DATA SELECTION AND EXTRACTION. Study selection was performed by 2 independent researchers (N.A.S., O.v.I.). All titles and abstracts of the retrieved papers were screened for the inclusion and exclusion criteria. Subsequently, full texts of the relevant manuscripts were retrieved and reviewed. The results from both researchers were compared and discussed until consensus was reached. In case of continued

disagreement, a third researcher was consulted (D.H.J.T.). After consensus was reached, the included studies were then summarized within a preformatted data sheet, in which report (ie, author and year), study (ie, sample characteristics, criteria used for AS), patient (ie, disease and surgical risk status, presence of comorbidities, measures of cardiac function), survival (ie, outcome measure, number of events, follow-up duration, prognostic value of LV-GLS), and measurement (ie, echo and analysis software vendor) characteristics were described. Authors were contacted whenever insufficient aggregate data were reported. When multiple manuscripts from the

TABLE 1 Population Characteristics of the Included Studies

| First Author | Design | Outcome | n | Women | Age (y) | AVA (cm ²) |
|-------------------------------------|----------------------|--|-----|-------|------------------|------------------------|
| Erhart et al ²⁰ | Retrospective cohort | All-cause mortality | 146 | 49 | 81.8 (78.6-85.8) | 0.79 (0.65-0.90) |
| Gegenava et al ²⁶ | Retrospective cohort | All-cause mortality | 210 | 50 | 80 ± 7 | 0.7 ± 0.2 |
| Kjønås et al ¹⁹ | Prospective cohort | All-cause mortality | 218 | 45 | 81.5 ± 6.8 | NR |
| Pedersen et al ²¹ | Retrospective cohort | All-cause mortality | 252 | 51 | 79.3 ± 6.7 | 0.67 ± 0.16 |
| Poulin et al ²⁵ | Retrospective cohort | All-cause mortality | 105 | 42 | 82.1 ± 7.8 | 0.68 ± 0.17 |
| Povlsen et al ²⁸ | Prospective cohort | All-cause mortality | 411 | 46 | 80.1 ± 7.1 | 0.7 ± 0.3 |
| Sato et al ²⁹ | Retrospective cohort | All-cause mortality | 209 | 42 | 81 ± 10 | NR |
| Shimoni et al ²⁷ | Retrospective cohort | All-cause mortality Hospitalization/cardiac death | 110 | 62 | 83 (6) | 0.73 ± 0.16 |
| Anastasius et al ²² | Prospective | HF hospitalization and death | 109 | 51 | 81 ± 7.3 | 0.7 (0.2) |
| Ferreira et al ²⁴ | Retrospective cohort | All-cause mortality MACE: all-cause mortality, stroke and HF hospitalization | 89 | 56 | 82.1 ± 5.9 | 0.6 ± 0.2 |
| Reskovic Luksic et al ²³ | Retrospective cohort | MACE: mortality and HF hospitalizations | 62 | 63 | 84.5 ± 6.6 | 0.77 ± 0.21 |
| Suzuki-Eguchi et al ³⁰ | Retrospective cohort | MACE: mortality and HF/stroke hospitalization | 128 | 66 | 83.7 ± 4.2 | 0.65 ± 0.18 |

TABLE 1 Continued

| First Author | Mean Transaortic Gradient (mm Hg) | NYHA Functional Class ≥III | HTN | DM | CAD | LVEF | LV-GLS | Follow-Up (mo) |
|-------------------------------------|-----------------------------------|----------------------------|-----|----|-----|------------------|--------------------------|------------------|
| Erhart et al ²⁰ | 37.5 (30.0-46.3) | 41 | 80 | 25 | 53 | 56.0 (46.8-62.3) | -17.0 (-18.93 to -14.80) | 24.3 (18.6-24.3) |
| Gegenava et al ²⁶ | 41 ± 18 | 57 | 76 | 26 | 60 | 46 ± 10 | -14 ± 4 | 31 (17-48) |
| Kjønås et al ¹⁹ | NR | NR | 68 | 28 | 67 | 49 ± 12 | -11 ± 4 | 33 ± 8 |
| Pedersen et al ²¹ | 43 ± 17 | 51 | 74 | 24 | 38 | 51 ± 11.2 | -12.7 ± 3.7 | 19 (10) |
| Poulin et al ²⁵ | 49 ± 15 | 88 | 82 | 29 | 66 | 53.8 ± 11.8 | -12.6 ± 3.9 | 38.5 (29.2-48.7) |
| Povlsen et al ²⁸ | 39 ± 16 | 78 | 73 | 18 | NR | 50 ± 13 | -14.0 ± 5.2 | 25.1 (19.4) |
| Sato et al ²⁹ | 47 ± 15 | 94 | 84 | 41 | 84 | 50 ± 14 | -12.0 ± 3.7 | 44.2 (27.0-55.0) |
| Shimoni et al ²⁷ | 45 ± 12 | 14 | 90 | 36 | 38 | 55 ± 8.7 | -13.4 ± 3.4 | 57 (35) |
| Anastasius et al ²² | 42.9 ± 13.2 | 82 | 96 | 34 | 41 | 62 (13) | -15 ± -3.5 | 14.1 (11.4-25.4) |
| Ferreira et al ²⁴ | 57.0 ± 16.8 | 72 | 87 | 28 | 52 | 56.7 ± 10.0 | -13.0 ± 3.8 | 13.4 (6.4-32.2) |
| Reskovic Luksic et al ²³ | 46.8 ± 17.3 | 61 | 71 | 26 | 44 | 64.5 ± 8.0 | -16.7 ± 2.4 | 42.0 ± 22.8 |
| Suzuki-Eguchi et al ³⁰ | 50 ± 18 | NR | 73 | 27 | 34 | 62 ± 13 | -15 ± 4.4 | 19.4 (NR) |

Values are median (IQR), mean ± SD, or n (%), unless otherwise indicated. When the lower and upper bounds of the IQR were not available, the width of the IQR was presented. Pedersen et al²¹ and Povlsen et al²⁸ showed overlap in patients, so Pedersen et al²¹ represents solely the unique patients of this cohort. Shimoni et al²⁷ provided data regarding an extended cohort. Kjønås et al¹⁹ provided data regarding an extended follow-up.

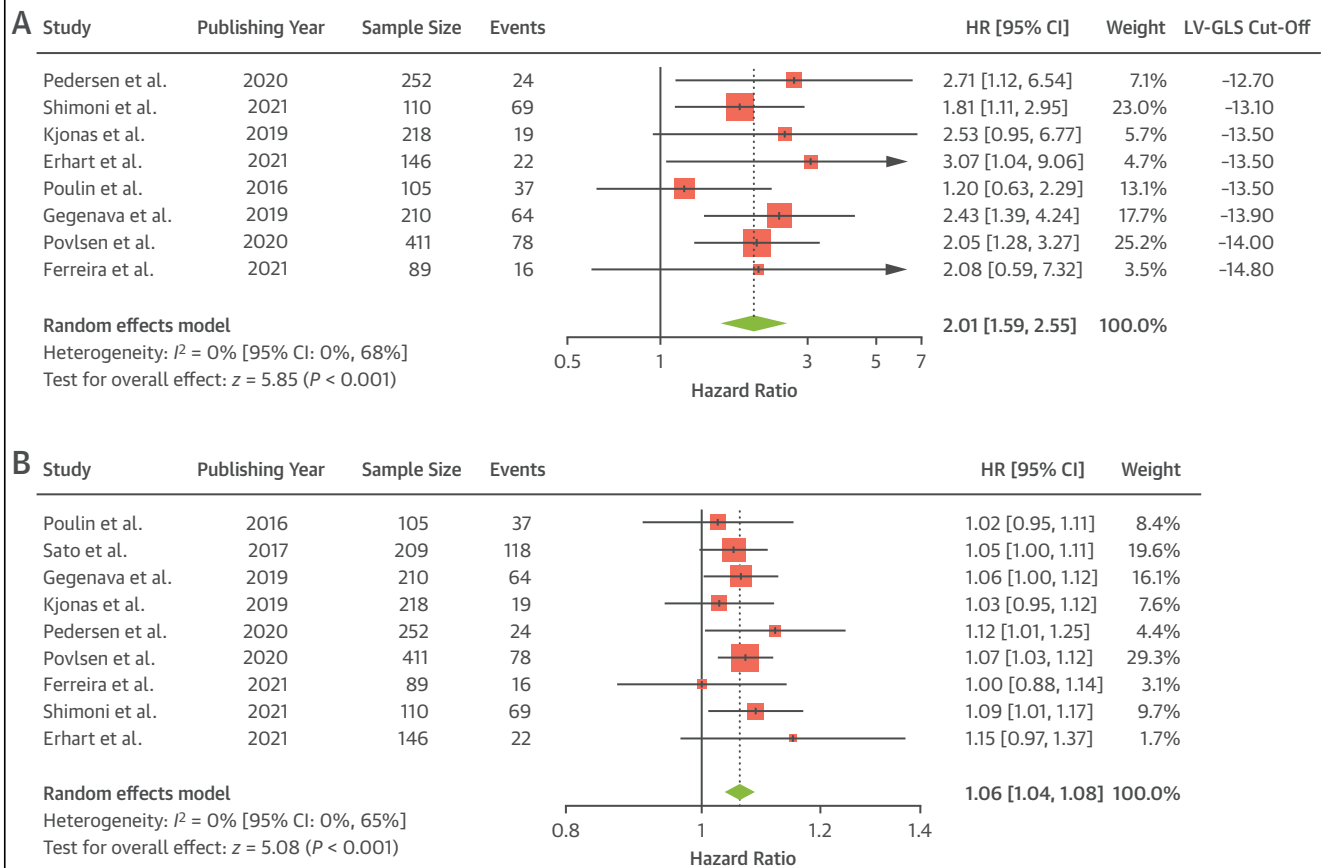
CAD = coronary artery disease; DM = diabetes mellitus; LV-GLS = left ventricular global longitudinal strain; HF = heart failure; HTN = hypertension; LVEF = left ventricular ejection fraction; MACE = major cardiovascular events; NR = not reported; NYHA = New York Heart Association.

same research group were included with overlapping time ranges, authors were asked to send data from unique patients only, to prevent patients from appearing twice in the meta-analysis.

RISK OF BIAS ASSESSMENT. The risk of bias of included studies was independently rated by 2 researchers (N.A.S., O.v.I.) using the Newcastle-Ottawa Scale.¹¹ Results were discussed until consensus was reached, where a third researcher (D.H.J.T.) was consulted in case of continued disagreement. Included studies were rated on 3 different domains, including the selection of the study groups, the comparability of the groups, and the ascertainment of the outcome. The quality score ranges from 0 to 9

points, where 1-3, 4-6, and 7-9 points are reflecting a high, intermediate, and low risk of bias respectively.

SYNTHESES OF RESULTS. Unadjusted HRs and corresponding 95% CIs were extracted from included studies that included all-cause mortality as their outcome measure, and unadjusted ORs and corresponding 95% CIs were extracted from studies that included MACE as their outcome measure. Transformation of HRs and ORs using the natural logarithm was performed to allow accurate estimation of the 95% CI for the pooled estimate. An inverse variance-weighted random effects model was subsequently used to pool per % LV-GLS decrease HRs for all-cause mortality following the DerSimonian and Laird

FIGURE 2 Forest Plot for the Association Between Preprocedural LV-GLS and Post-TAVR All-Cause Mortality

LV-GLS on a dichotomous (A) (ie, high vs low LV-GLS) and continuous (B), per percentage point decrease in LV-GLS [toward 0%] scale vs all-cause mortality. Sato et al²⁹ did not present data regarding the association between LV-GLS (on a dichotomous scale) and all-cause mortality, so this study was removed from A. Weights are obtained via the random effects analysis. TAVR = transcatheter aortic valve replacement; other abbreviation as in Figure 1.

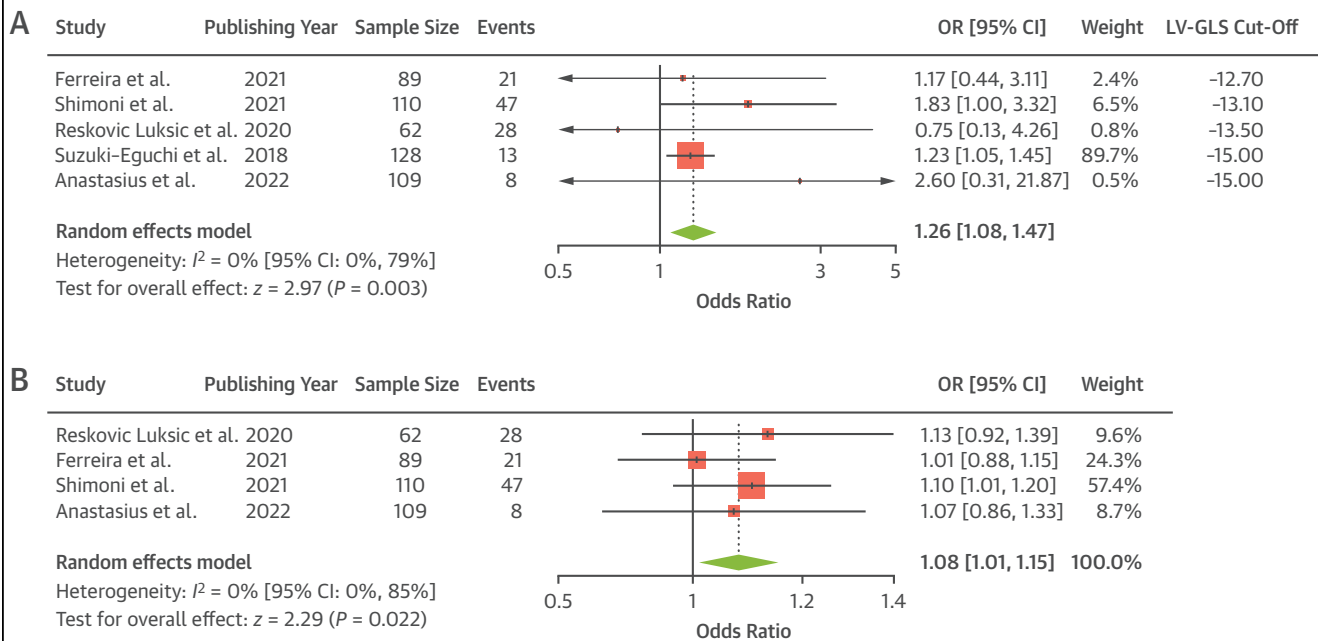
approach.¹² In an individual analysis, we explored trends when LV-GLS was presented on a dichotomous scale (ie, impaired vs preserved LV-GLS) for all-cause mortality and MACE separately. The median LV-GLS was used as a cutoff to dichotomize LV-GLS if between -12% and -15% . If this criterion was not satisfied, authors were contacted to share the HR/OR corresponding to an LV-GLS of -13.5% . To evaluate heterogeneity present within the included studies, we used the I^2 test, with $>50\%$ indicating significant heterogeneity. Subgroup analyses were performed to evaluate the influence of design type (ie, prospective vs retrospective design) and risk of bias. Inverted funnel plots and Egger's test were used to exploratively evaluate the presence of publication bias. Analyses were performed in R version 4.1.2 (R Foundation for Statistical Computing) using the meta-

package (version 5.1-1),¹³ in which a 2-tailed value of $P = 0.05$ was used to claim statistical significance. Data are presented as mean \pm SEM, median (IQR), or frequency and proportion, as appropriate.

RESULTS

SEARCH RESULTS. In total, 1,130 studies were identified after applying the specified search string in PubMed, Embase, and Web of Science. Screening of the titles and abstracts with respect to the inclusion and exclusion criteria, combined with the removal of duplicates, resulted in the exclusion of 1,075 papers. Subsequent assessment of the full text of the remaining 55 papers resulted in further exclusion of 38 papers, leaving 17 relevant studies. To overcome methodological constraints in pooling of the data,

FIGURE 3 Forest Plot for the Association Between Preprocedural LV-GLS and Post-TAVR MACE



LV-GLS on a dichotomous (A) (ie, high vs low LV-GLS) and continuous (B) (ie, per percentage point decrease in LV-GLS [toward 0%]) scale vs MACE. Suzuki-Eguchi et al³⁰ did not present data regarding the association between LV-GLS (on a continuous scale) and MACE, so this study was removed from B. Weights are obtained via the random effects analysis. OR = odds ratio; other abbreviations as in Figures 1 and 2.

authors were contacted to provide aggregate data for the association between LV-GLS (ie, per percentage point decrease and/or high vs low LV-GLS) vs primary (ie, all-cause mortality) and secondary (ie, MACE) outcomes. Five studies originally met the requirements for inclusion, but were excluded because: 1) the paper did not report sufficient data to allow analysis and the authors were not able to share the required data;¹⁴⁻¹⁷ or 2) the study covered the same cohort¹⁸ as another included study.¹⁹ Authors of 9 publications provided unpublished data.¹⁹⁻²⁷ Taken together, this resulted in the inclusion of 12 studies in the meta-analysis of which 9 evaluated the association of preprocedural LV-GLS with all-cause mortality (n = 1,750)^{19-21,24-29} and 5 with MACE (n = 498),^{22-24,27,30} respectively. **Figure 1** visualizes the sequential steps performed previously.

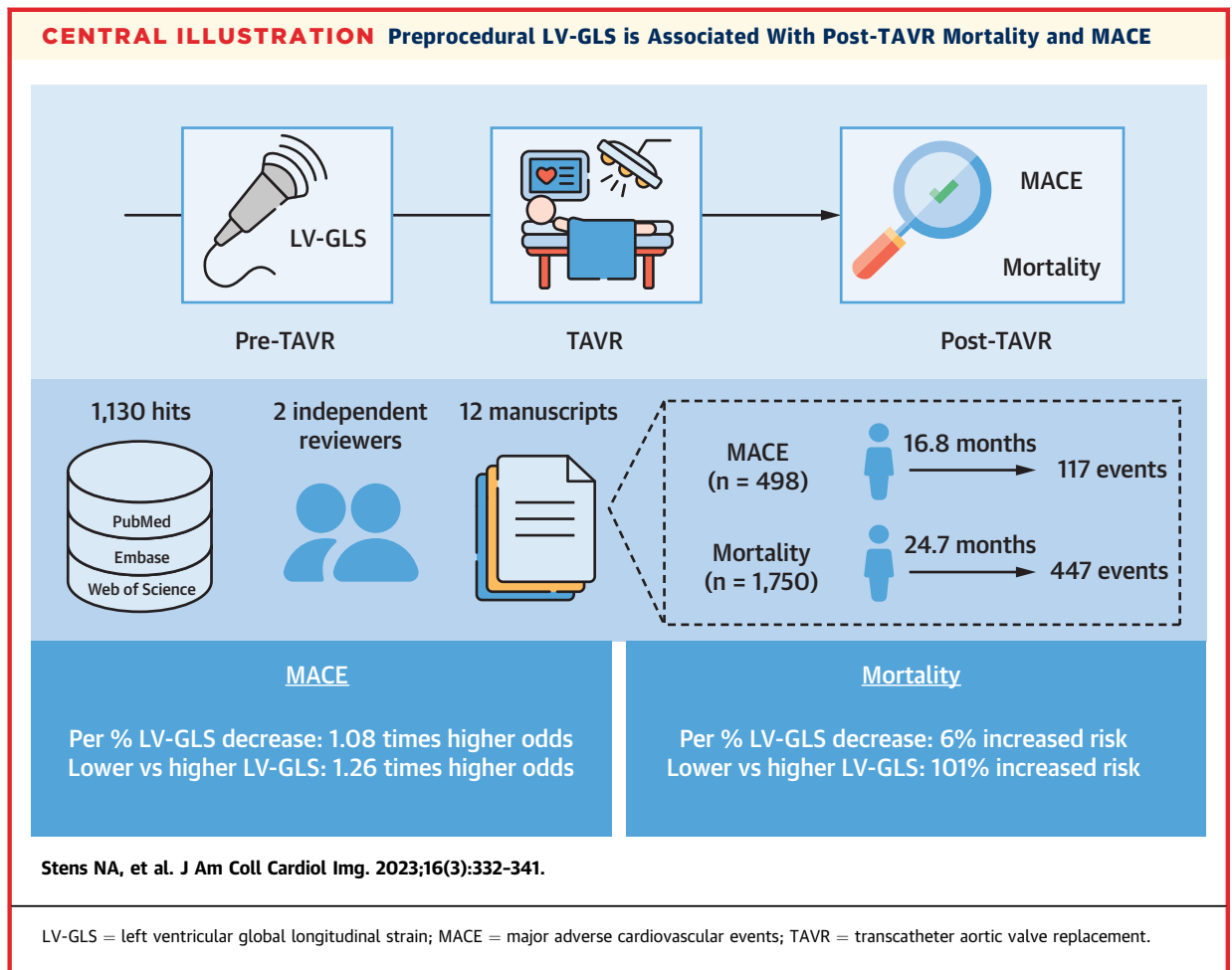
POPULATION CHARACTERISTICS.

Preprocedural characteristics of the included studies are depicted in **Table 1**. The analytical cohort of the 12 included studies comprised 2,049 unique patients (49.8% women) with AS who underwent TAVR. Mean age was 81.1 ± 0.5 years and New York Heart Association (NYHA) functional class ≥III was reported in 66.0%. Mean aortic valve area was 0.70 ± 0.02 cm² with a mean transaortic pressure gradient of

43.6 ± 1.8 mm Hg. Comorbidities were frequent (prevalence of hypertension 77.7%, diabetes 27.1%, coronary artery disease 54.6%). On average, patients demonstrated preserved LVEF (mean: 52.6% ± 1.7%) but impaired LV-GLS (mean: -13.6% ± 0.6%). In terms of risk of bias, 5 studies had an intermediate risk of bias (Newcastle-Ottawa Scale = 6) and the remaining studies showed a low risk of bias (Newcastle-Ottawa Scale ≥7) (**Supplemental Table 2**).

LV-GLS VS CLINICAL OUTCOMES. During a median follow-up of 24.7 (IQR: 22.5-32.9) months, overall all-cause mortality was 25.5% (n = 447). Patients with a lower preprocedural LV-GLS had a higher risk of all-cause mortality compared with patients with a higher LV-GLS (pooled HR 2.01 [95% CI: 1.59-2.55]; $P < 0.001$; $I^2 = 0\%$ [95% CI: 0%-68%]; $P = 0.74$) (**Figure 2A**). Each 1% lower LV-GLS (ie, toward 0%) was associated with an increased mortality risk after TAVR (pooled HR: 1.06 [95% CI: 1.04-1.08]; $P < 0.001$; $I^2 = 0\%$ [95% CI: 0%-65%]; $P = 0.79$) (**Figure 2B**).

In addition, during a median follow-up of 16.8 (IQR: 13.6-36.7) months, MACE occurred in 117 patients (23.5%). Patients with a lower preprocedural LV-GLS had a higher odds of MACE compared with patients with a higher LV-GLS (pooled OR: 1.26 [95% CI: 1.08-1.47]; $P = 0.003$; $I^2 = 0\%$ [95% CI: 0%-



79%]; $P = 0.67$) (Figure 3A). In addition, each 1% decrease in LV-GLS was associated with an increased odds of MACE after TAVR (pooled OR: 1.08 [95% CI: 1.01-1.15]; $P = 0.022$; $I^2 = 0\%$ [95% CI: 0%-85%]; $P = 0.67$) (Figure 3B).

Subgroup analyses suggested no significant differences in prognostic value of LV-GLS for all-cause mortality between prospective and retrospective studies, and between studies with a low and moderate risk of bias (Supplemental Table 3). Exploratory assessment of publication bias for the association between preprocedural LV-GLS (on a continuous and dichotomous scale) and all-cause mortality via inverted funnel plots and Egger's tests suggested no publication bias (Supplemental Figure 1).

DISCUSSION

The aim of this meta-analysis was to evaluate the prognostic value of LV-GLS for post-TAVR morbidity

and mortality in patients with severe, symptomatic AS undergoing TAVR. First, despite different cutoff values when LV-GLS was modeled on a dichotomous scale, those with a lower preprocedural LV-GLS demonstrated a significantly higher post-TAVR risk for all-cause mortality (101% increased risk) and odds for MACE (1.26 times higher odds) compared with individuals with a higher LV-GLS. In addition, we found that every percentage point decline in LV-GLS was associated with an increased risk for post-TAVR all-cause mortality (6% higher risk) and odds for MACE (1.08 times higher odds). Taken together, our meta-analysis demonstrates that LV-GLS is significantly associated with post-TAVR outcomes (Central Illustration), which suggests an important role for the preprocedural evaluation of LV-GLS for risk stratification of patients with severe symptomatic AS for clinical outcomes post-TAVR.

Assessment of systolic dysfunction has been considered the mainstay of risk stratification in

patients with AS. Current guidelines advocate the presence of an impaired LVEF as a gatekeeper for aortic valve replacement.^{1,2} However, the recovery of LV function after TAVR varies widely and more sensitive methodologies to detect subclinical LV dysfunction are warranted. Speckle tracking has emerged as a relevant method to quantify subclinical and clinical systolic dysfunction. Unfortunately, studies that used LV-GLS as a prognostic factor for events post-TAVR were often limited by a small sample size, causing most studies to conclude that LV-GLS has no significant prognostic value. The ability to pool aggregate data from 2,049 individuals within our meta-analysis effectively overcomes this limitation. Indeed, in our meta-analysis we found that preprocedural LV-GLS was significantly associated with post-TAVR all-cause mortality in patients with severe, symptomatic AS.

Compared with all-cause mortality, the association between preprocedural LV-GLS and post-TAVR cardiovascular morbidity has been less extensively described in published reports. The pooling of the 5 included studies reinforces both the limitation of relatively small sample sizes, but also the potential benefit of meta-analyses to provide better insight into these areas. Our meta-analysis showed that preprocedural LV-GLS is also significantly related to post-TAVR morbidity. It should be noted that an OR is dependent on the number of events and the sample size,³¹ which may explain the observation that the pooled effect is largely determined by 2 individual studies. Nevertheless, reports have highlighted that the preprocedural LV-GLS correlated with the improvement in NYHA functional class³² and complication rate directly following TAVR.³³ To further support our observations, previous work using computed tomography angiography reinforced that a lower LV-GLS is related to a higher risk of all-cause mortality and heart failure hospitalizations.³⁴ Although it remains premature to make definitive conclusions, the presented evidence, paired with recent reports, suggests that LV-GLS also has potential for risk stratification of patients with severe AS for post-TAVR morbidity. This warrants future studies to elaborate on the association between preprocedural LV-GLS and post-TAVR morbidity.

The observation that LV-GLS is associated with morbidity and mortality in patients undergoing TAVR raises the question about the potential underlying physiological mechanism. In essence, AS transcends the definition of an isolated valvular disease with its considerable implications for cardiac function and structure. Compensatory LV hypertrophy develops in

response to the persistent pressure overload induced by the stenotic aortic valve, as an attempt to compensate and normalize LV wall stress and systolic function. Because the subendocardial myocytes are susceptible to reductions in coronary blood flow,³⁵ the accompanied myocardial ischemia mainly affects longitudinally oriented muscle fibers. If pressure overload persists, irreversible myocardial fibrosis and a reduction in myocardial (longitudinal) function may occur. This may explain why global LV afterload, LV mass, and replacement fibrosis are independently associated with LV-GLS in patients with AS.^{36,37} In addition, transthyretin cardiac amyloidosis is often coexisting in patients with AS.³⁸ In patients with cardiac amyloidosis, the degree of deposited myocardial amyloid fibrils strongly correlated with longitudinal strain in all segments in a 17-segment model.³⁹ Also others found that LV-GLS is more impaired in patients with AS with concurrent transthyretin cardiac amyloidosis compared with those with isolated AS.⁴⁰ These processes may contribute to the ability of LV-GLS to predict post-TAVR all-cause mortality.

Although our meta-analysis revealed that a dichotomous cutoff has prognostic value, substantial variation in using cutoff values was present between these studies. This raises questions on its applicability, but also what would represent the optimal LV-GLS cutoff for prognosis of post-TAVR outcomes in patients with severe symptomatic AS. Variation in cutoffs was minimized by setting a range of LV-GLS for the dichotomous analysis (ie, between -12% and -15%). Because no clear trend was observed in a change in HRs in relation to the increase in cutoff values (Figure 2), it seems unlikely that the variation in cutoffs explained the large interstudy variability that we observed when LV-GLS was modeled on a dichotomous scale. Alternatively, differences in the patient's risk profile may play an important role in this large interstudy variability. Although all studies included patients with severe, symptomatic AS, differences in comorbidity prevalence (ie, hypertension, diabetes, coronary artery disease) and/or disease status (ie, mean transvalvular gradient, NYHA functional class) may affect the association between LV-GLS and post-TAVR mortality. In addition, data regarding the degree of myocardial fibrosis and cardiac amyloidosis were not present, even though these entities are frequently encountered in patients with AS.^{38,40,41} This should be acknowledged when interpreting our data.

STUDY LIMITATIONS. First, in asymptomatic patients with more than moderate AS, the association

between % decline LV-GLS and mortality appears to follow a nonlinear shape.⁸ The exact shape of the dose-response curve between preprocedural LV-GLS and post-TAVR all-cause mortality remains to be clarified.^{28,34} In other words, each additional decrease in % LV-GLS would be highly informative on demonstration of a linear pattern in symptomatic patients who undergo TAVR. Insufficient data were available to elaborate on the shape of the dose-response curve. Another limitation is that most of the included studies were retrospective cohort studies, and all studies reported univariate HRs. This highlights that residual confounding may be present, which could affect the pooled estimates in either direction.⁴²

CONCLUSIONS

This meta-analysis showed that preprocedural LV-GLS as measured by 2D-speckle tracking is significantly associated with TAVR-related outcomes in patients with severe, symptomatic AS, irrespective of how LV-GLS was modeled. Even though LVEF is commonly used in patients with AS for risk stratification and adopted as a gatekeeper for aortic valve replacement, LVEF seems to remain preserved until late in the AS disease process because of compensatory mechanisms in cardiac structure. Indeed, LVEF seems largely preserved in patients with severe, symptomatic AS from the studies we included in our meta-analysis. In contrast to LVEF, alterations in LV-GLS seem to occur early in the disease process of AS, potentially even preceding changes in LVEF. Addition of evaluation of LV-GLS to current guideline-based assessment of LVEF may provide clinicians with better risk stratification for patients undergoing TAVR.

FUNDING SUPPORT AND AUTHOR DISCLOSURES

Mr Stens was supported by a personally obtained grant from the Radboud University Medical Center. Dr Nijveldt has received grants from Philips Volcano and Biotronik for the iMODERN (iFR Guided Multi-vessel Revascularization During Percutaneous Coronary Intervention for Acute Myocardial Infarction) trial, educational fees from Sanofi Genzyme and Bayer, and has served as the vice president elect of the EACVI CMR section (unpaid). Dr Bax has served on the Speaker Bureau for Abbott and Edwards Lifesciences. All other authors have reported that they have no relationships relevant to the contents of this paper to disclose.

ADDRESS FOR CORRESPONDENCE: Dr Dick H.J. Thijssen, Department of Physiology (928), Radboud University Medical Center, P.O. Box 9101, 6500 HB Nijmegen, the Netherlands. E-mail: Dick.Thijssen@radboudumc.nl.

PERSPECTIVES

COMPETENCY IN MEDICAL KNOWLEDGE: In this meta-analysis of 12 studies including 2,049 patients with severe, symptomatic AS, we demonstrate that preprocedural LV-GLS is significantly associated with post-TAVR outcomes. This suggests an important role for the evaluation of LV-GLS for risk stratification of patients with severe symptomatic AS for clinical outcomes post-TAVR.

TRANSLATIONAL OUTLOOK: Alterations in LV-GLS seem to occur early in the disease process of AS, potentially even preceding changes in LVEF. Addition of evaluation of LV-GLS to current guideline-based assessment of LVEF may therefore provide clinicians with improved risk stratification, allowing for timely recognition, intervention, and intensified follow-up.

REFERENCES

- Otto CM, Nishimura RA, Bonow RO, et al. 2020 ACC/AHA guideline for the management of patients with valvular heart disease: a report of the American College of Cardiology/American Heart Association Joint Committee on Clinical Practice Guidelines. *J Am Coll Cardiol*. 2021;77(4):e25-e197.
- Vahanian A, Beyersdorf F, Praz F, et al. 2021 ESC/EACTS guidelines for the management of valvular heart disease. *Eur J Cardiothorac Surg*. 2021;60:727-800.
- Osna-brugge RL, Mylotte D, Head SJ, et al. Aortic stenosis in the elderly: disease prevalence and number of candidates for transcatheter aortic valve replacement: a meta-analysis and modeling study. *J Am Coll Cardiol*. 2013;62:1002-1012.
- Ng AC, Delgado V, Bertini M, et al. Alterations in multidirectional myocardial functions in patients with aortic stenosis and preserved ejection fraction: a two-dimensional speckle tracking analysis. *Eur Heart J*. 2011;32:1542-1550.
- Farsalinos KE, Daraban AM, Ünlü S, et al. Head-to-head comparison of global longitudinal strain measurements among nine different vendors: The EACVI/ASE Inter-Vendor Comparison Study. *J Am Soc Echocardiogr*. 2015;28:1171-1181.e2.
- Brown J, Jenkins C, Marwick TH. Use of myocardial strain to assess global left ventricular function: a comparison with cardiac magnetic resonance and 3-dimensional echocardiography. *Am Heart J*. 2009;157:102.e1-102.e5.
- Blessberger H, Bergler-Klein J, Graf S, et al. Speckle tracking-derived longitudinal strain: validation and influence of scanner settings. *Ultrasound Med Biol*. 2021;47:154-162.
- Magne J, Cosyns B, Popescu BA, et al. Distribution and prognostic significance of left ventricular global longitudinal strain in asymptomatic significant aortic stenosis: an individual participant data meta-analysis. *J Am Coll Cardiol Img*. 2019;12:84-92.
- Zhu D, Ito S, Miranda WR, et al. Left ventricular global longitudinal strain is associated with long-

- term outcomes in moderate aortic stenosis. *Circ Cardiovasc Imaging*. 2020;13:e009958.
10. Page MJ, McKenzie JE, Bossuyt PM, et al. The PRISMA 2020 statement: an updated guideline for reporting systematic reviews. *BMJ*. 2021;372:n71.
11. Wells GA, Shea B, O'Connell D, et al. The Newcastle-Ottawa Scale (NOS) for assessing the quality of nonrandomised studies in meta-analyses. Accessed November 20, 2021. http://www.ohri.ca/programs/clinical_epidemiology/oxford.asp
12. DerSimonian R, Laird N. Meta-analysis in clinical trials. *Control Clin Trials*. 1986;7:177-188.
13. Balduzzi S, Rucker G, Schwarzer G. How to perform a meta-analysis with R: a practical tutorial. *Evid Based Ment Health*. 2019;22:153-160.
14. Dimitriadis Z, Scholtz S, Ensminger S, et al. Left ventricular adaptation after TAVI evaluated by conventional and speckle-tracking echocardiography. *Int J Cardiol*. 2017;228:633-637.
15. Salaun E, Casalta AC, Donal E, et al. Apical four-chamber longitudinal left ventricular strain in patients with aortic stenosis and preserved left ventricular ejection fraction: analysis related with flow/gradient pattern and association with outcome. *Eur Heart J Cardiovasc Imaging*. 2018;19(8):868-878.
16. Fukui M, Thoma F, Sultan I, et al. Baseline global longitudinal strain is associated with all-cause mortality after transcatheter aortic valve replacement. *J Am Coll Cardiol Img*. 2020;13(4):1092-1094.
17. Weber J, Bond K, Flanagan J, et al. The prognostic value of left atrial global longitudinal strain and left atrial phasic volumes in patients undergoing transcatheter valve implantation for severe aortic stenosis. *Cardiology*. 2021;146(4):489-500.
18. Kjønsås D, Schirmer H, Aakhus S, et al. Clinical and echocardiographic parameters predicting 1- and 2-year mortality after transcatheter aortic valve implantation. *Front Cardiovasc Med*. 2021;8:739710.
19. Kjønsås D, Dahle G, Schirmer H, et al. Predictors of early mortality after transcatheter aortic valve implantation. *Open Heart*. 2019;6:e000936.
20. Erhart L, Donati T, Anwer S, et al. Left ventricular twist predicts mortality in severe aortic stenosis. *Heart*. 2022;108(3):225-232.
21. Pedersen ALD, Povlsen JA, Dybro A, et al. Prevalence and prognostic implications of increased apical-to-basal strain ratio in patients with aortic stenosis undergoing transcatheter aortic valve replacement. *J Am Soc Echocardiogr*. 2020;33:1465-1473.
22. Anastasius M, Ro R, Gavalas M, et al. The Effect of TAVR on left ventricular and left atrial mechanics in patients with aortic stenosis. *J Cardiovasc Dev Dis*. 2022;9(2):35.
23. Reskovic Luksic V, Postolache A, Martinez C, et al. Global and regional myocardial function and outcomes after transcatheter aortic valve implantation for aortic stenosis and preserved ejection fraction. *J Cardiovasc Med (Hagerstown)*. 2020;21:238-245.
24. Ferreira VV, Rosa SA, Pereira-da-Silva T, et al. Prevalence and prognostic impact of apical sparing contractility pattern in patients with aortic stenosis referred for transcatheter aortic valve implantation. *Am J Cardiovasc Dis*. 2021;11:283-294.
25. Poulin F, Yingchoncharoen T, Wilson WM, et al. Impact of prosthesis-patient mismatch on left ventricular myocardial mechanics after transcatheter aortic valve replacement. *J Am Heart Assoc*. 2016;5:e002866.
26. Gegenava T, Vollema EM, van Rosendaal A, et al. Changes in left ventricular global longitudinal strain after transcatheter aortic valve implantation according to calcification burden of the thoracic aorta. *J Am Soc Echocardiogr*. 2019;32:1058-1066.e2.
27. Shimoni S, Zikri M, Haberman D, et al. ATTR cardiac amyloidosis in patients who underwent transcatheter aortic valve replacement: long term survival. *ESC Heart Fail*. 2021;8(6):4549-4561.
28. Povlsen JA, Rasmussen VG, Vase H, et al. Distribution and prognostic value of left ventricular global longitudinal strain in elderly patients with symptomatic severe aortic stenosis undergoing transcatheter aortic valve replacement. *BMC Cardiovasc Disord*. 2020;20(1):506.
29. Sato K, Kumar A, Jones BM, et al. Reversibility of cardiac function predicts outcome after transcatheter aortic valve replacement in patients with severe aortic stenosis. *J Am Heart Assoc*. 2017;6(7):e005798.
30. Suzuki-Eguchi N, Murata M, Itabashi Y, et al. Prognostic value of pre-procedural left ventricular strain for clinical events after transcatheter aortic valve implantation. *PLoS One*. 2018;13(10):e0205190.
31. Szumilas M. Explaining odds ratios. *J Can Acad Child Adolesc Psychiatry*. 2010;19:227-229.
32. Kempny A, Diller GP, Kaleschke G, et al. Longitudinal left ventricular 2D strain is superior to ejection fraction in predicting myocardial recovery and symptomatic improvement after aortic valve implantation. *Int J Cardiol*. 2013;167:2239-2243.
33. Al-Rashid F, Totzeck M, Saur N, et al. Global longitudinal strain is associated with better outcomes in transcatheter aortic valve replacement. *BMC Cardiovasc Disord*. 2020;20:267.
34. Fukui M, Hashimoto G, Lopes BBC, et al. Association of baseline and change in global longitudinal strain by computed tomography with post-transcatheter aortic valve replacement outcomes. *Eur Heart J Cardiovasc Imaging*. 2022;23:476-484.
35. Lunkenheimer PP, Redmann K, Kling N, et al. Three-dimensional architecture of the left ventricular myocardium. *Anat Rec A Discov Mol Cell Evol Biol*. 2006;288:565-578.
36. Le TT, Huang W, Singh GK, et al. Echocardiographic global longitudinal strain is associated with myocardial fibrosis and predicts outcomes in aortic stenosis. *Front Cardiovasc Med*. 2021;8:750016.
37. Kobayashi Y, Kim JB, Moneghetti KJ, et al. Dynamic changes in aortic impedance after transcatheter aortic valve replacement and its impact on exploratory outcome. *Int J Cardiovasc Imaging*. 2017;33:1693-1701.
38. Castaño A, Narotsky DL, Hamid N, et al. Unveiling transthyretin cardiac amyloidosis and its predictors among elderly patients with severe aortic stenosis undergoing transcatheter aortic valve replacement. *Eur Heart J*. 2017;38:2879-2887.
39. Ternacle J, Bodez D, Guellich A, et al. Causes and consequences of longitudinal LV dysfunction assessed by 2D strain echocardiography in cardiac amyloidosis. *J Am Coll Cardiol Img*. 2016;9:126-138.
40. Ternacle J, Krapf L, Mohty D, et al. Aortic stenosis and cardiac amyloidosis: JACC Review Topic of the Week. *J Am Coll Cardiol*. 2019;74:2638-2651.
41. Treibel TA, López B, González A, et al. Reappraising myocardial fibrosis in severe aortic stenosis: an invasive and non-invasive study in 133 patients. *Eur Heart J*. 2018;39:699-709.
42. Fewell Z, Davey Smith G, Sterne JA. The impact of residual and unmeasured confounding in epidemiologic studies: a simulation study. *Am J Epidemiol*. 2007;166:646-655.

KEY WORDS aortic stenosis, echocardiography, morbidity, mortality, strain, transcatheter aortic valve replacement

APPENDIX For supplemental tables and a figure, please see the online version of this paper.